

Wireless One Gang Dimmer Control With Power Consumption

Data sheet

Version 0.2

NETVOX TECHNOLOGY CO., LTD.

Add:No. 21-1 Sec. 1 Chung Hua West Road, Tainan, Taiwan

Tel: s886-6-2617641, 2654878

Fax:s886-6-2656120

<http://www.netvox.com.tw>

History

Version	Date	Note
0.1	2014-02-26	Initial Release
0.2	2014-5-15	Change power consumption

Notes:

Main PCB: 61z825E6801

Version Hardware: V0.3

61Z825E6801 V0.3

61Z825C6802 V0.2

61Z825C6803 V1.0

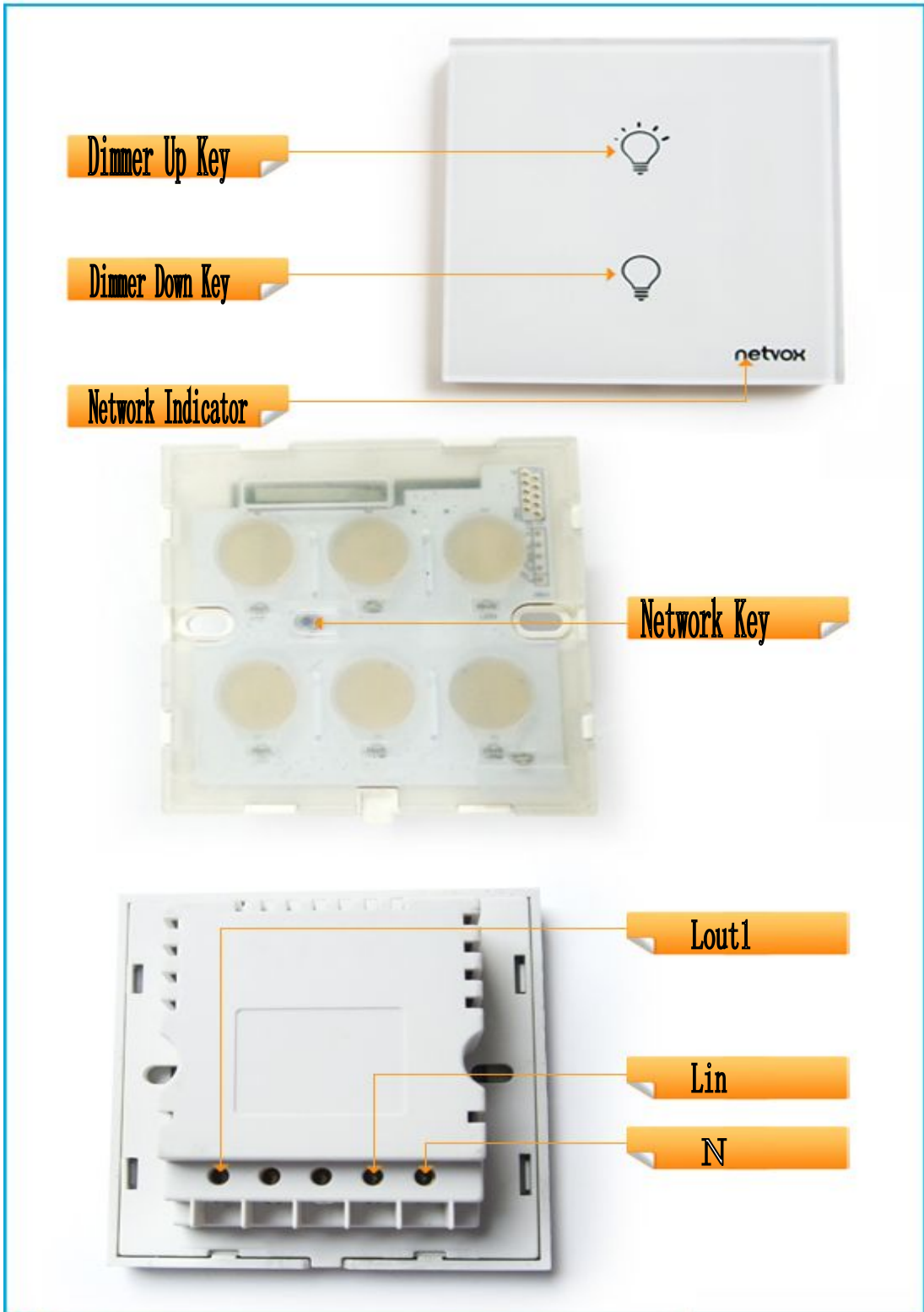


Figure 1 Z825D Appearance

Overview

The Z825D is a device for power measurement, dimming output, and can be used as a ZigBee™ network router. It integrates the EMBER 357 chip and is a transceiver for the 2.4GHz ISM segment which is fully compatible with The ZigBee Pro protocol. It can communicate with routers and the coordinator.

The Z825D is a wireless control output single-circuit dimming device with built-in power metering to measure the power consumption of the load, and touch buttons can be used for switching and dimming functions.

Application areas

Indoor smart electrical switches for homes or businesses

Key features

- 2.4GHz IEEE802.15.4/ZigBee Pro™
- As a router to allow other devices to join their networks
- Single-way dimming output
- Circuit voltage, total current, total power, etc. can be measured
- With memory chip to record the total energy consumption information of the controlled circuit
- Capacitive touch control

Technical parameters

Electrical characteristics

Enter the power supply	100-240VAC, 50/60Hz
Output Load (MIN)	35mA/220VAC (resistive load)
Output Load (MAX)	2A/220VAC (resistive load)
Typical operating current	0.6W (230V/8.5mA 50Hz)
Energy measurement	<+-1%

error	
Current measurement accuracy range	100mA to 4A

RF performance

Frequency bandwidth	2.4 to 2.4835 GHz
Path capacity	16 (ISM Channels 11-26)
Power output	7 dBm (maximum)
Antenna type	Built-in antenna
Communication distance	120 m (visible distance in open space)
Receive sensitivity	-101dBm
Data transfer rate	250Kbps
Modulation	DSSS (O-QPSK)

Physical properties

Size	Panel 86x86x9 (units: mm) Buttom 68 x58x25 (units: mm)
Ambient humidity	5% to 85%RH (no condensation)
Operating temperature	-10°C ~ +50°C
Storage temperature	-40°C ~ +85°C